

Understanding Liposome Flux Assays in the context of a Bacterial Sodium Voltage Gated Channels (NavAb)

Biological data analysis in R

Tingwei Adeck

July 23, 2022

AlphaPrime University

Table of contents

1. Introduction
2. Diagnostic results in Excel
3. Normalized Results (Makes all the sense in the world)
4. Noise vs Signal
5. Conclusion

Introduction

Chart of NavAb affinity constants for different ions

Ion(s)	Affinity Constant(Ka)
Na ⁺	1.0

Chart of NavAb affinity constants for different ions

Ion(s)	Affinity Constant(Ka)
Na ⁺	1.0
K ⁺	0.14

Chart of NavAb affinity constants for different ions

Ion(s)	Affinity Constant(Ka)
Na ⁺	1.0
K ⁺	0.14
Rb ⁺	0.02

Chart of NavAb affinity constants for different ions

Ion(s)	Affinity Constant(Ka)
Na ⁺	1.0
K ⁺	0.14
Rb ⁺	0.02
Cs ⁺	0.005

Chart of NavAb affinity constants for different ions

Ion(s)	Affinity Constant(Ka)
Na ⁺	1.0
K ⁺	0.14
Rb ⁺	0.02
Cs ⁺	0.005
H ⁺	??

Table 1: NavAb affinity constants

Characteristics of liposome flux assays (LFAs)

- Channel-insert liposomes

Characteristics of liposome flux assays (LFAs)

- Channel-insert liposomes
- A fluorophore is present within the channel-insert liposome

Characteristics of liposome flux assays (LFAs)

- Channel-insert liposomes
- A fluorophore is present within the channel-insert liposome
- liposomes are a form of lipid bilayers

Characteristics of liposome flux assays (LFAs)

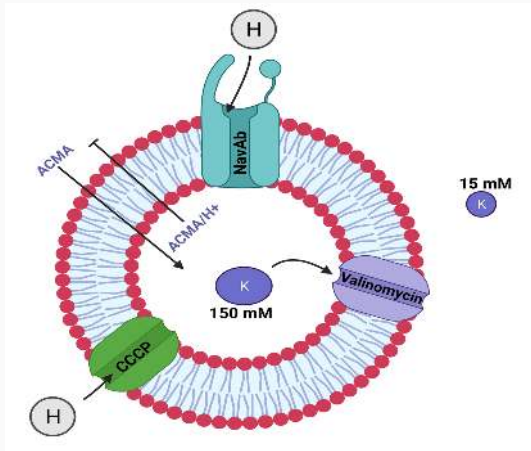
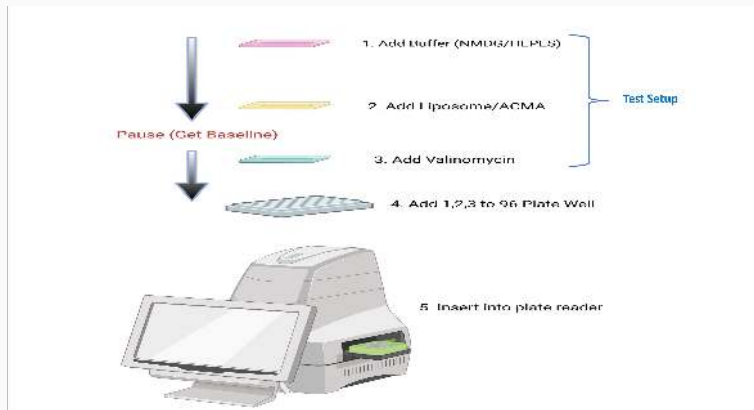


Figure 1: Na^+ -insert liposome

Practical image of experiment



Created with BioRender.com

Figure 2: experiment

Diagnostic results in Excel

Characteristics of liposome flux assays (LFAs)

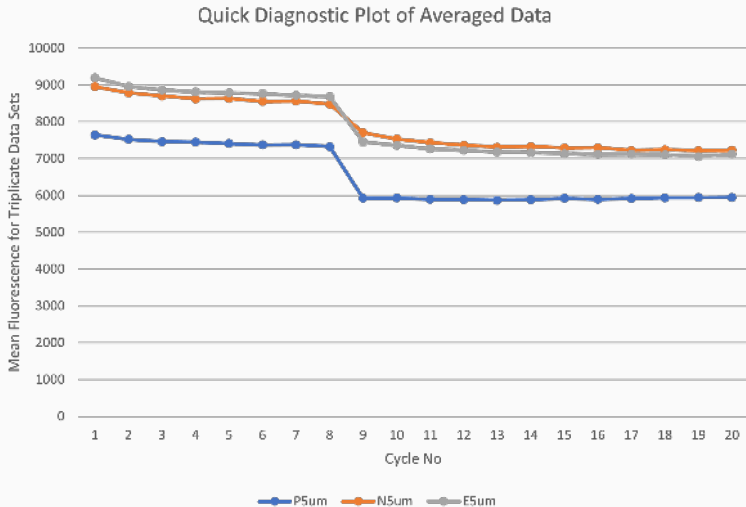


Figure 3: Na⁺-insert liposome

Normalized Results (Makes all the sense in the world)

Fluorescence measured at 2,3,5 μM

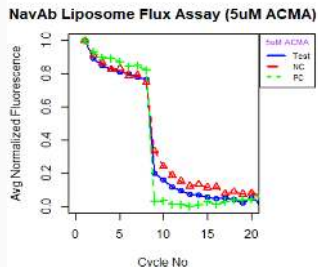
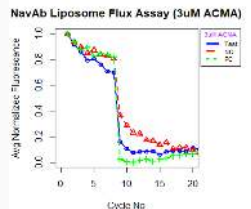
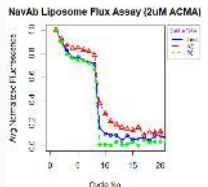


Figure 4: Legend: Normalized fluorescence in R within the signal zone

Fluorescence measured with K^+ vs Cs^+ inside the liposome μM

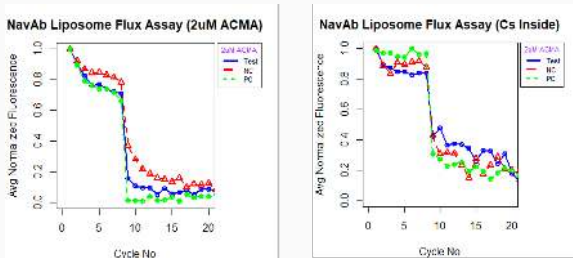


Figure 5: NavAb K-conductivity is stronger than Cs-conductivity as indicated by the initial affinity table

Fluorescence measured with K^+ vs Cs^+ inside the liposome μM



Figure 6: NavAb K-conductivity is stronger than Cs-conductivity as indicated by the initial affinity table

ACMA dosage at 2,3,4,5 μM

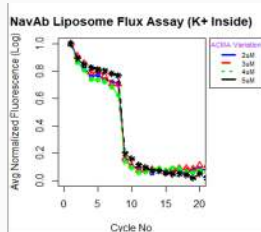
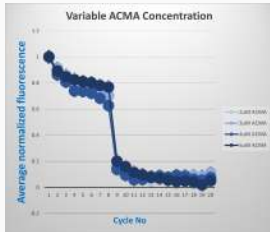


Figure 7: Fluorophore dosage is not a factor in its quenching, rather system properties (Ion conductivity etc.) determine quenching

Noise vs Signal

Fluorescence measured at 0.2 and 20 μM

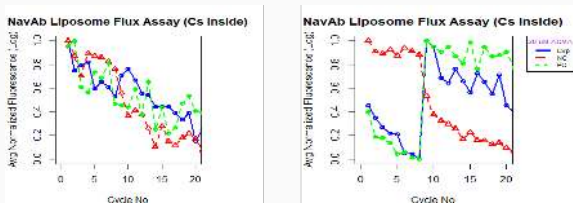


Figure 8: Legend: Normalized fluorescence in R within the signal zone

Conclusion

Quenching drivers

We showed that the Nernst Potential (Valinomycin) and proton flux (CCCP) should be investigated as potential factors in ACMA quenching behavior.

Conclusion

Quenching drivers

We showed that the Nernst Potential (Valinomycin) and proton flux (CCCP) should be investigated as potential factors in ACMA quenching behavior.

ACMA concentration

We showed that there is a concentration for ACMA to make it useful as a signaling molecule in flux assays.

Conclusion

Quenching drivers

We showed that the Nernst Potential (Valinomycin) and proton flux (CCCP) should be investigated as potential factors in ACMA quenching behavior.

ACMA concentration

We showed that there is a concentration for ACMA to make it useful as a signaling molecule in flux assays.

Noise vs Signal

We showed that we could use noise to interpret our flux assays.

Conclusion

Quenching drivers

We showed that the Nernst Potential (Valinomycin) and proton flux (CCCP) should be investigated as potential factors in ACMA quenching behavior.

ACMA concentration

We showed that there is a concentration for ACMA to make it useful as a signaling molecule in flux assays.

Noise vs Signal

We showed that we could use noise to interpret our flux assays.

Conclusion

Quenching drivers

We showed that the Nernst Potential (Valinomycin) and proton flux (CCCP) should be investigated as potential factors in ACMA quenching behavior.

ACMA concentration

We showed that there is a concentration for ACMA to make it useful as a signaling molecule in flux assays.

Noise vs Signal

We showed that we could use noise to interpret our flux assays.

Conclusion

Quenching drivers

We showed that the Nernst Potential (Valinomycin) and proton flux (CCCP) should be investigated as potential factors in ACMA quenching behavior.

ACMA concentration

We showed that there is a concentration for ACMA to make it useful as a signaling molecule in flux assays.

Noise vs Signal

We showed that we could use noise to interpret our flux assays.

Conclusion

Quenching drivers

We showed that the Nernst Potential (Valinomycin) and proton flux (CCCP) should be investigated as potential factors in ACMA quenching behavior.

ACMA concentration

We showed that there is a concentration for ACMA to make it useful as a signaling molecule in flux assays.

Noise vs Signal

We showed that we could use noise to interpret our flux assays.

Thanks and Questions?

Thanks and Questions?

Thanks and Questions?

Thanks and Questions?

Thanks and Questions?

Thanks and Questions?

Thanks and Questions?

References

- [1] Zhenwi. Su. *Novel cell-free high-throughput screening method for pharmacological tools targeting K⁺ channels*. PNAS, 113(5744-5788), 2016.
- [2] Joshua V. *A Single Molecule Study on The Structural Basis of Ion Selective Permeation in Voltage-Gated Sodium Channels.* , 2021.